

VISUALIZE
the possibilities.



FLOW CYTOMETRY RARE EVENTS ANALYSIS DURACLONE RE PANELS

CTC MEETING PRAGUE 16. 9. 2016

Roman Vlcek · Beckman Coulter Czech Republic

Delivering INNOVATIVE and trusted scientific solutions across the globe

©2016 Beckman Coulter, Inc. All rights reserved. Beckman Coulter, the stylized logo, and the Beckman Coulter product and service marks used herein are the trademarks or registered trademarks of Beckman Coulter, Inc. in the United States & other countries.





BECKMAN COULTER: CONCEPT CELLULAR ANALYSIS



**Gallios™/
Navios™
Analyzer**

- 20 bit dynamic range
- 25,000 events per second
- Selection of up to 62 parameters
- Integrated vortexer



**Aquios™
Load and Go Analyzer**

- Fully automated
- Just insert primary blood tube
- Results within 20 min.
- Sample prep. + analysis in one instrument



CytoFLEX

- 13 colors, 4 lasers
- Avalanche photo diodes
- Side scatter from violet laser

Antibody Cocktail Preparation Systems



- Biomek Technology
- Cooled racks
- Span-8
- Vials, tubes and plates
- Easy panel setup

Reagents

- Large palette of CE and ASR products
- Longest expertise in tandem dye technology
- Dry reagent portfolio





MULTICOLOR SAMPLE PREPARATION



All manually...?





MULTICOLOR SAMPLE PREPARATION



Or rather automated...?

Walk-away-
platform to free up
time

Excellent Pipetting
Performance





A row of Duracclone Comp Tubes in various colors (green, yellow, red, orange, blue, pink) with labels for different assays: FITC, PE, ECD, Krome Orange, PC7, PacBlue, APC, and Alexa 750.



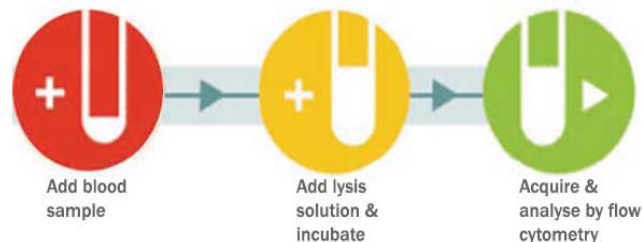


DURACLONE KEY PRODUCT FEATURES

Dry coated antibodies in tubes



Workflow improvement



Unitized format: Ready-to-use tubes



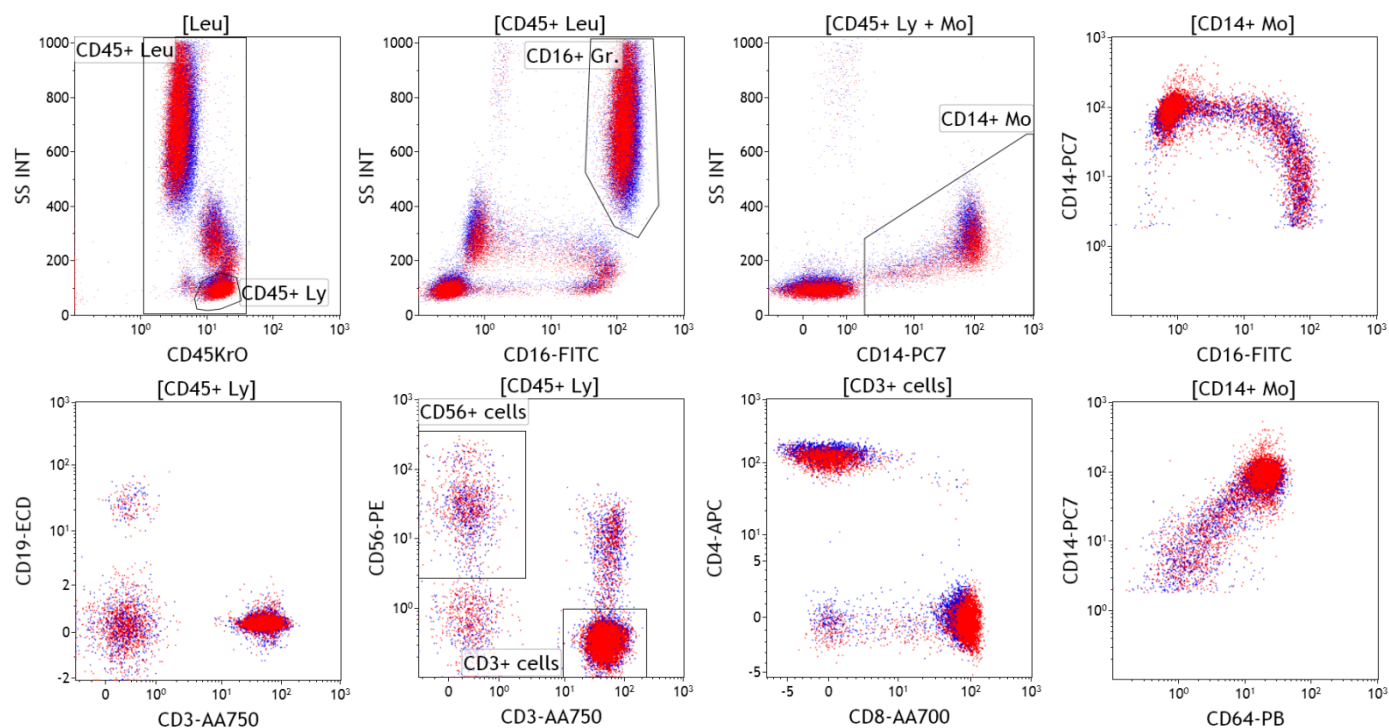
"Preserving flawless reagent (Non aging tandem dyes) performance while storing and shipping at room temperature"





DRY REAGENTS THAT PERFORM LIKE LIQUID

FITC	PE	ECD	PC7	APC	APCA700	APCA750	PacBlue	KrO
CD16	CD56	CD19	CD14	CD4	CD8	CD3	CD64	CD45

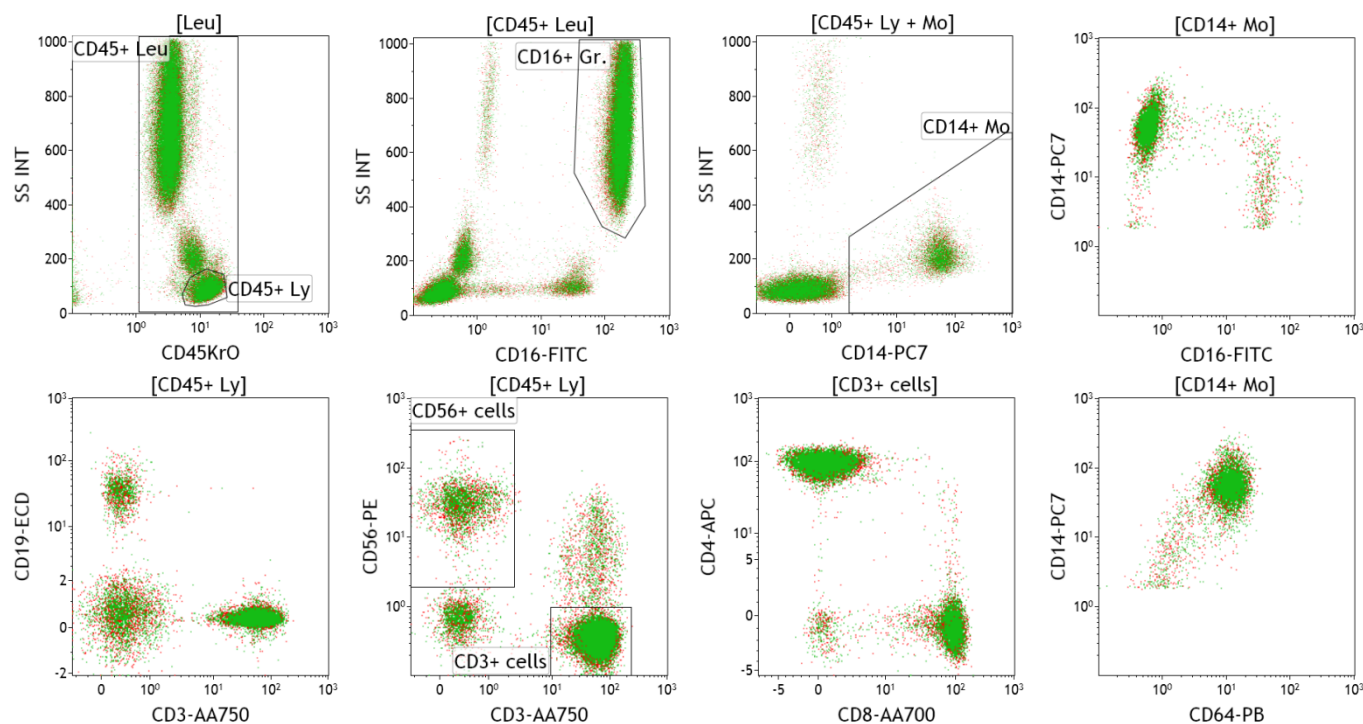


Liquid
DuraClone Dry



DURACLONE: TEMPERATURE STABLE

FITC	PE	ECD	PC7	APC	APCA700	APCA750	PacBlue	KrO
CD16	CD56	CD19	CD14	CD4	CD8	CD3	CD64	CD45







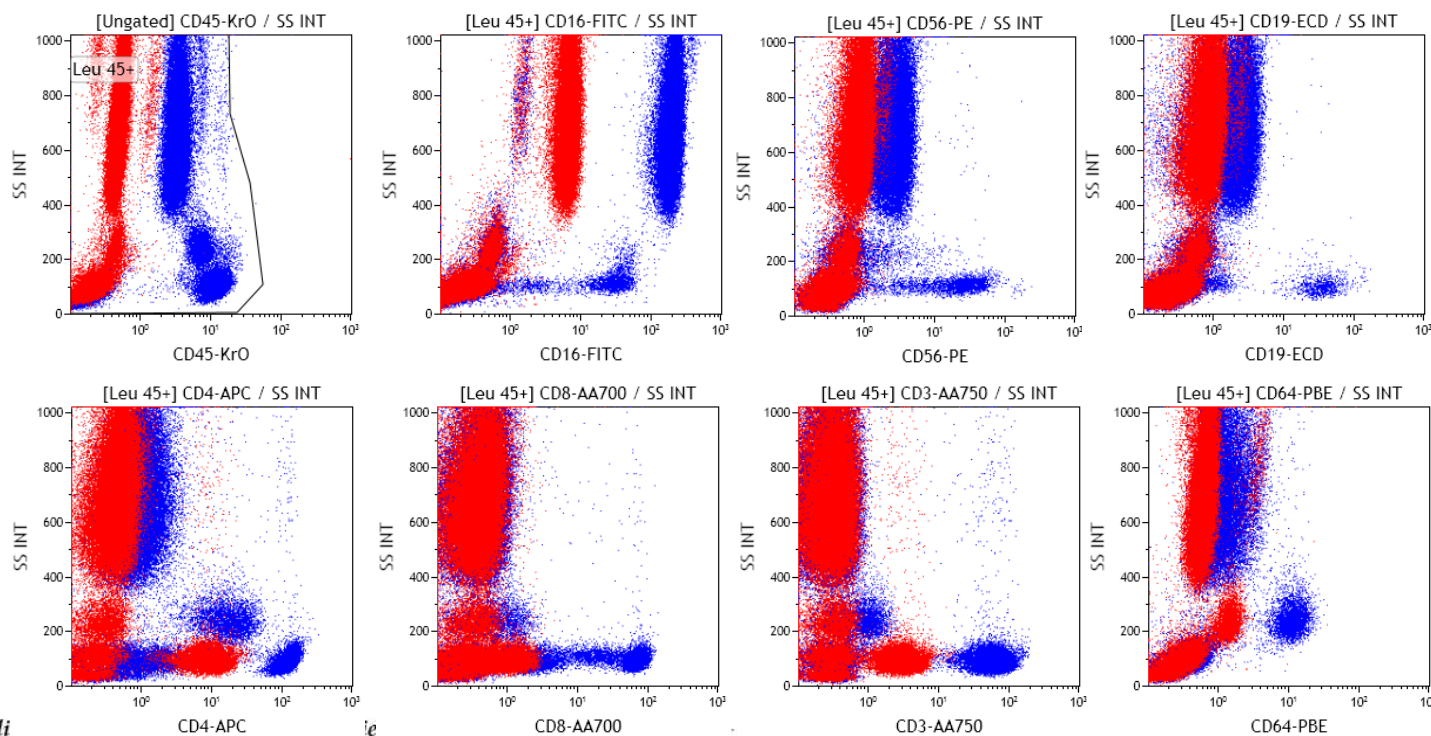
DURACLONE: TEMPERATURE STABLE



Liquid TBNK panel* stored at 60°C for 7 days is severely compromised

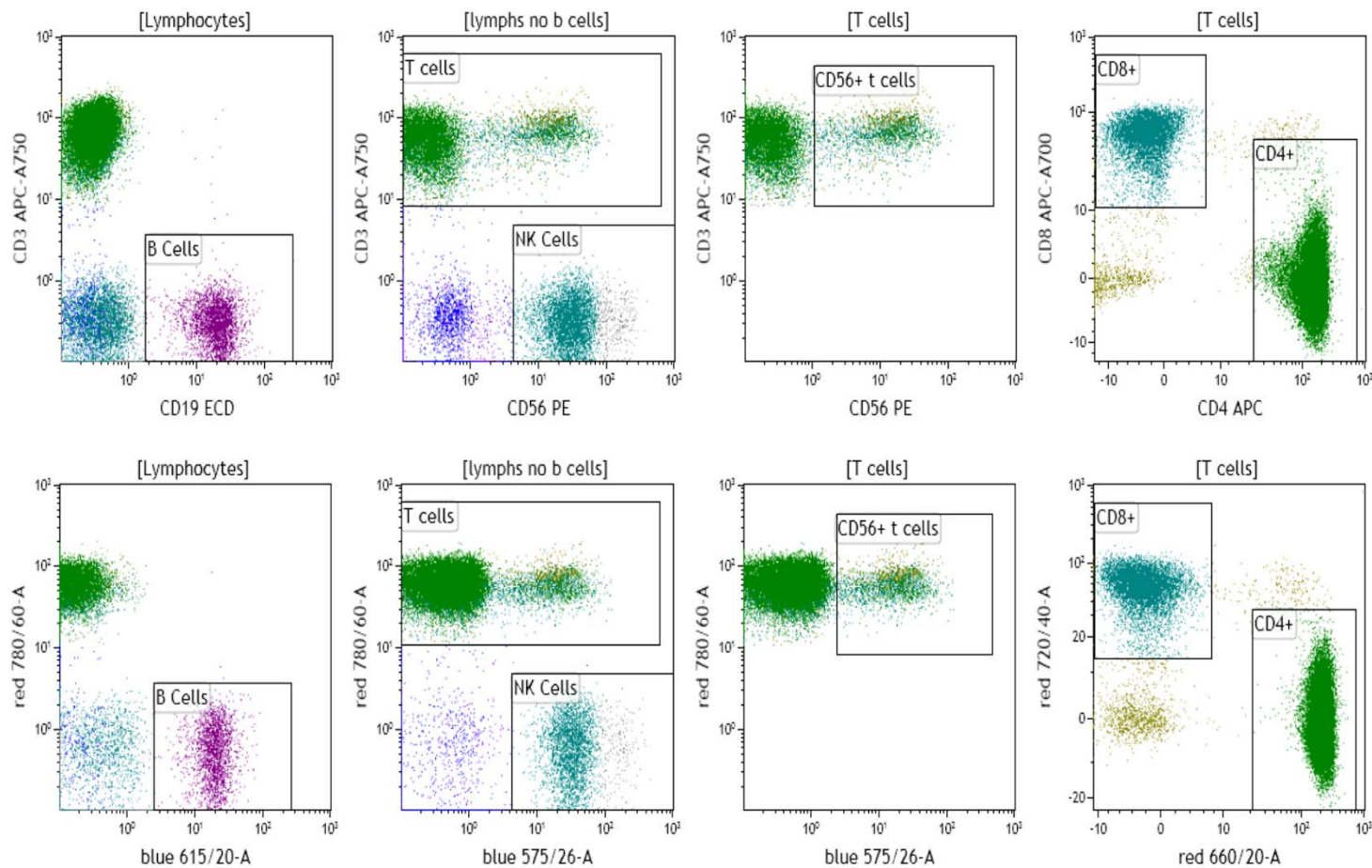
FITC	PE	ECD	PC7	APC	APCA700	APCA750	PacBlu	KrO
CD16	CD56	CD19	CD14	CD4	CD8	CD3	CD64	CD45

 RT
 7 Days at 60°C





DURACLONE: PLATFORM INDEPENDENT



Top row: Navios (Beckman Coulter)
Bottom row: LSR II (Becton Dickinson)

Delivering INNOVATIVE and trusted scientific solutions across the globe

©2016 Beckman Coulter, Inc. All rights reserved. Beckman Coulter, the stylized logo, and the Beckman Coulter product and service marks used herein are the trademarks or registered trademarks of Beckman Coulter, Inc. in the United States & other countries.



DURACLONE WORKFLOW



DuraClone test tube

Sample

Lysing reagent

Simple: No pipetting of antibodies

Smart: Eliminate costly storage and user mistakes

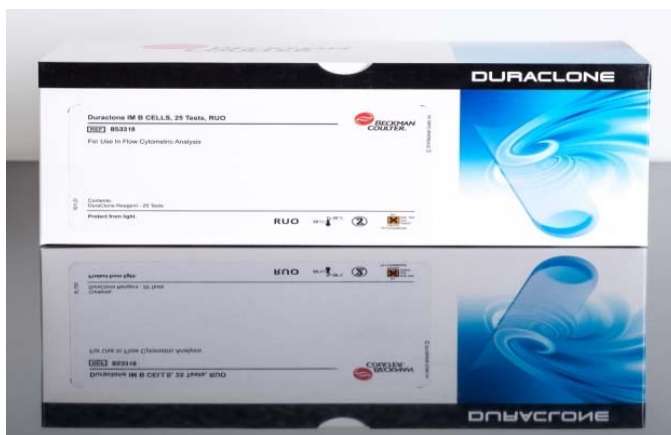
Efficient: No more cold chain storage



DuraClone RE Tubes: Kit Contents

- Every Panel contains 25 Tests along with 3 compensation kits (singles)

Kit Box



Panel Tubes



Pouches



Compensation Tubes



Delivering INNOVATIVE and trusted scientific solutions across the globe

©2016 Beckman Coulter, Inc. All rights reserved. Beckman Coulter, the stylized logo,

and the Beckman Coulter product and service marks are trademarks of Beckman Coulter, Inc.

* For research use only. Not for use in diagnostic procedures.



NEW: DURACLONE RE PANELS (25tests/kit)

B30983 / DuraClone RE CLB*: Detection of normal and anomalous CD5+ B cells

Detection of CD45 ⁺ CD19 ⁺ ROR-1 ⁺ CD5 ⁺⁺ CD43 ⁺⁺ CD81 ^{dim} CD20 ^{dim} CD79b ^{dim} B cells											
DuraClone [®] RE CLB Tube	PB	KrO	FITC	PE	ECD	PC5.5	PC7	APC	AF700	APC-AF750	Quality Standard
B80983 (25 tests RUO)	CD20	CD45	CD81	ROR-1	-	CD79b	CD19	CD5	-	CD43	GMP

- Optimized for 300ul of peripheral whole blood
- Including ROR-1 as up-and-coming marker in rare event detection of anomalous B cells
- Following the latest ERIC recommendations (Rawstron et al.; Leukemia 2015)
- Drop-in slots for CD22, CD3, CD38 etc. catalogue products
- Canto II-compatible

* For research use only. Not for use in diagnostic procedures.

Delivering INNOVATIVE and trusted scientific solutions across the globe

©2016 Beckman Coulter, Inc. All rights reserved. Beckman Coulter, the stylized logo, and the Beckman Coulter product and service marks used herein are the trademarks or registered trademarks of Beckman Coulter, Inc. in the United States & other countries.

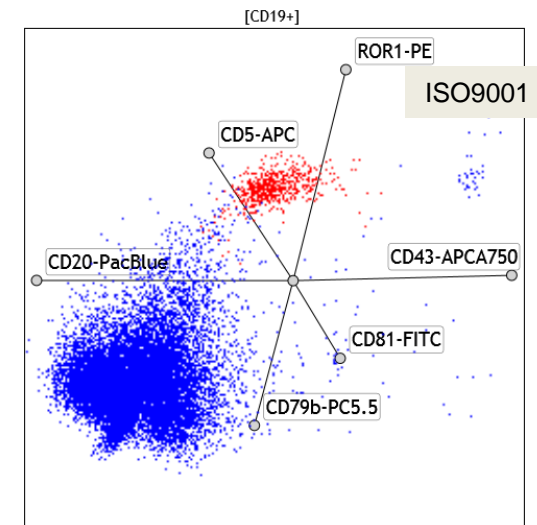
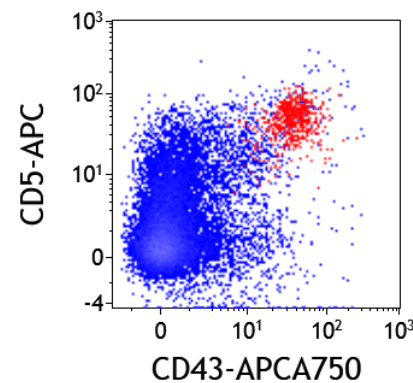
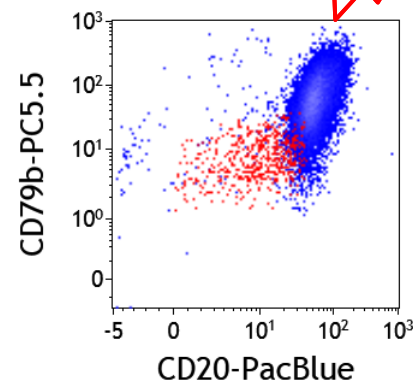
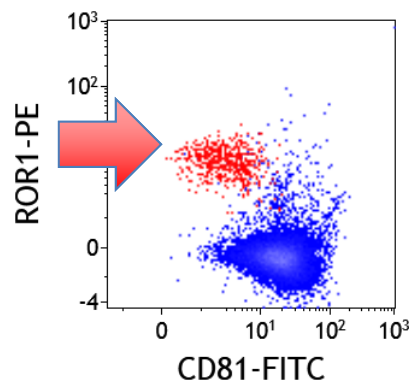




THE DURACLONE RE* CLB TUBE

Detection of CD45⁺CD19⁺ROR-1⁺CD5⁺⁺CD43⁺⁺CD81^{dim}CD20^{dim}CD79b^{dim} B cells

DuraClone [®] RE CLB Tube	PB	KrO	FITC	PE	ECD	PC5.5	PC7	APC	AF700	APC-AF750	Quality Standard
B80983 (25 tests RUO)	CD20	CD45	CD81	ROR-1	-	CD79b	CD19	CD5	-	CD43	GMP



Normal B cells (16,414) ROR+1 target B cells (581)
Leukocytes CD45+ (825,000), not shown

* For Research Use Only. Not for use in diagnostic procedures.

Delivering INNOVATIVE and trusted scientific solutions across the globe

©2016 Beckman Coulter, Inc. All rights reserved. Beckman Coulter, the stylized logo, and the Beckman Coulter product and service marks used herein are the trademarks or registered trademarks of Beckman Coulter, Inc. in the United States & other countries.





NEW: DURACLONE RE PANELS (RUO)

B30984 / DuraClone RE PC*: Detection of normal and anomalous plasma cells

Detection of CD45⁺CD38⁺CD138⁺CD56⁺CD200⁺CD19^{dim}CD27^{dim}CD81^{dim} plasma cells

DuraClone ⁵ RE PC Tube	PB	KrO	FITC	PE	ECD	PC5.5	PC7	APC	AF700	APC-AF750	Quality Standard
B80984 (25 tests RUO)	CD38	CD45	CD81	CD27	-	CD19	CD200	CD138	-	CD56	GMP

- Optimized for 5×10^6 of total leukocytes (bulk lysis)
- Including CD200 as up-and-coming marker in detection of anomalous plasma cells
- Following the latest recommendations (De Tute, Rawstron et al.; Haematologica 2015)
- Drop-in slots for CD117, CD28, CD34 etc. catalogue products
- Canto II-compatible

* For research use only. Not for use in diagnostic procedures.

Delivering INNOVATIVE and trusted scientific solutions across the globe

©2016 Beckman Coulter, Inc. All rights reserved. Beckman Coulter, the stylized logo, and the Beckman Coulter product and service marks used herein are the trademarks or registered trademarks of Beckman Coulter, Inc. in the United States & other countries.



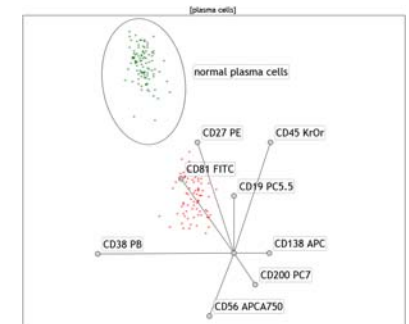
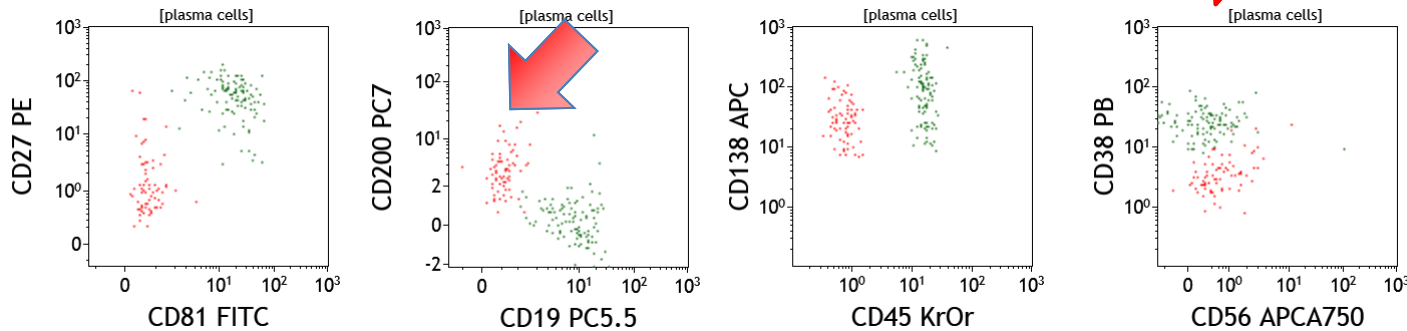


THE DURACLONE RE* PC TUBE

Detection of CD45⁺CD38⁺CD138⁺CD56⁺CD200⁺CD19^{dim}CD27^{dim}CD81^{dim} plasma cells

DuraClone [®] RE PC Tube	PB	KrO	FITC	PE	ECD	PC5.5	PC7	APC	AF700	APC-AF750	Quality Standard
B80984 (25 tests RUO)	CD38	CD45	CD81	CD27	-	CD19	CD200	CD138	-	CD56	GMP

ISO9001



Normal plasma cells (107) anomalous plasma cells (83)
Leukocytes CD45⁺ (1,634,000), not shown

* For Research Use Only. Not for use in diagnostic procedures.

Delivering INNOVATIVE and trusted scientific solutions across the globe

©2016 Beckman Coulter, Inc. All rights reserved. Beckman Coulter, the stylized logo, and the Beckman Coulter product and service marks used herein are the trademarks or registered trademarks of Beckman Coulter, Inc. in the United States & other countries.





CUSTOM DESIGN SERVICES (CDS)

AVAILABLE FROM 200 TESTS

Product Category	Description	Antibody Source
Custom Conjugations	FITC PE PE tandem dyes: ECD, PC5, PC7 PerCP APC, A700, A750 APC tandem dyes: APC-A700, APC-A750 Pacific Blue Krome Orange	Conjugation of BCI owned antibodies or customer-supplied antibodies
Custom Cocktails	2-color 3-color 4-color 5-color 6-color 7-color 8-color 9-color 10-color	Optimizations and configuration with existing BCI-conjugated or customer-supplied antibodies



CDS

Custom Design Services

Delivering INNOVATIVE and trusted scientific solutions across the globe

©2016 Beckman Coulter, Inc. All rights reserved. Beckman Coulter, the stylized logo, and the Beckman Coulter product and service marks used herein are the trademarks or registered trademarks of Beckman Coulter, Inc. in the United States & other countries.





THE DURACLONE ADVANTAGES

- Faster results
- Reduced scrap
- Longer Shelf Life
- Simplified inventory control
- Higher confidence level of results
- Ease of use
- Resilient to a wider temperature range
- Runs on all flow cytometers

